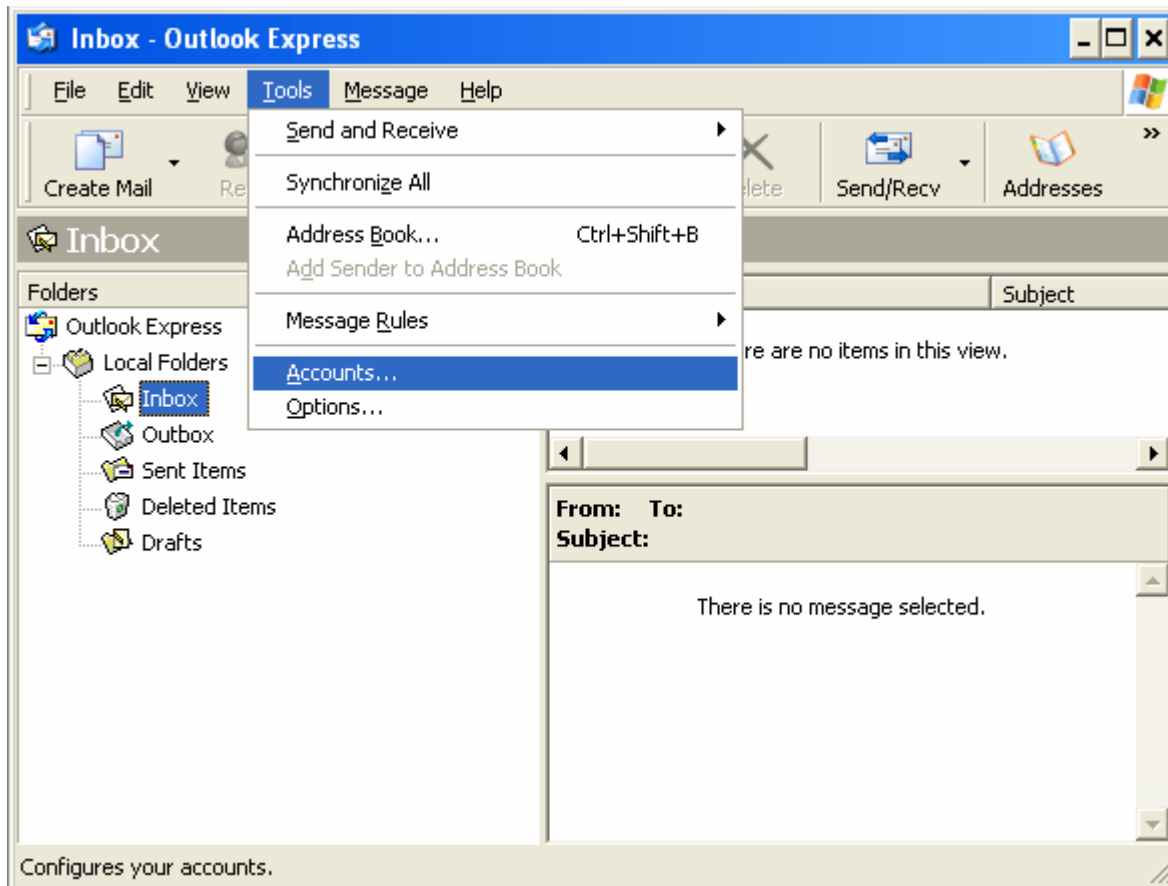


How to update your Outgoing Mail Server (SMTP) - Outlook Express

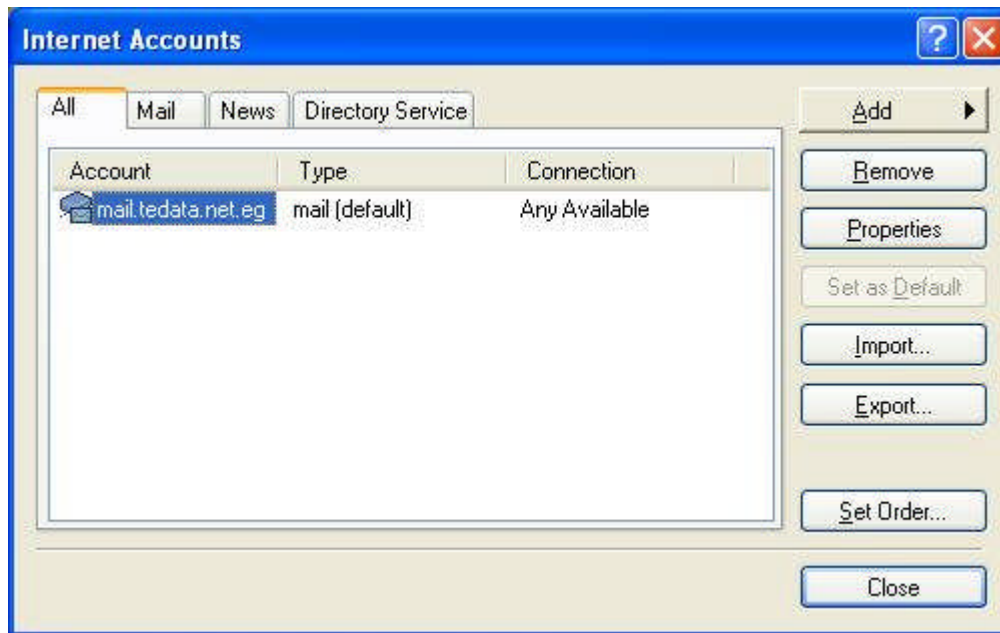
Follow this tutorial **if you can receive your email but cannot send mail**.

Use it as well to simply **make sure your email program is configured optimally**.

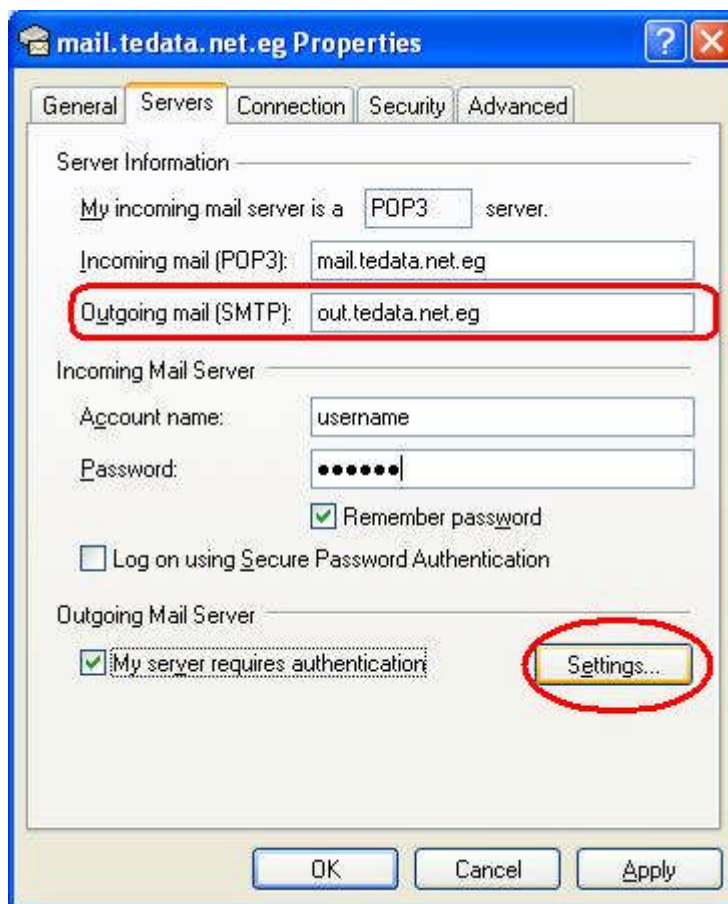
1 - Open Outlook Express, go to the **Tools** menu and choose **Accounts**:



2 - This should open a dialog box named **Internet Accounts**. Make sure you are on the second tab called **Mail**, and **double-click** on the name of your tedata email account (most likely, it will be named mail.tedata.net.eg).



3 - You should now see the following dialog box:



Go to the second tab called **Servers**.

Under Server Information, the name of your incoming mail server should be: **mail.tedata.net.eg**

In the **Outgoing Mail (SMTP)** box, you should have: **out.tedata.net.eg**
in the lower section, you should see a checkbox called **my server requires authentication**. Please **CHECK** that box.

Now, click on the **Settings** button next to it.

4 - A dialog box like this one should have popped up:



Choose the first radio button called **Use Same Setting as my incoming mail server**.

Do NOT check the last box called Log on using Secure Password Authentication (SPA).

You can now click **OK** to confirm the changes.

This will close the current dialog box and take you back to the **mail.tedata.net.eg Properties** window. Please click **OK** on that window to close it.

You should now be back on the **Internet Accounts** window. Click the **Close** button to finish.



:: Copyright © 2007 . TE Data Support Team . All Rights Reserved ::

:: For Further Informations Call Us At 19777 ::

